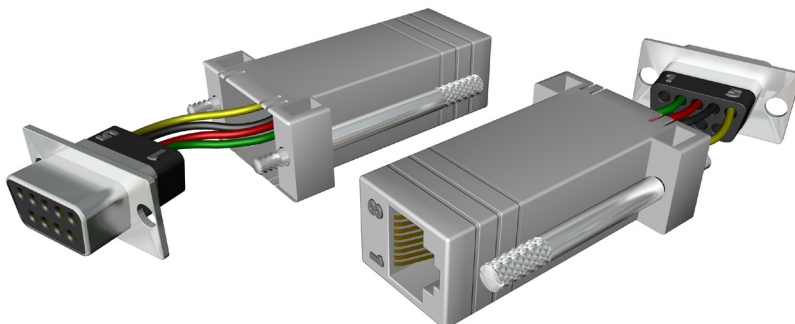


MediaMaster™ Video On Demand System

ACI/ACM Diagnostic Cable Adapter

MM-1203



Specifications

ACI side: RJ-45F
(accepts RJ-11)
PC side: DB-9F (RS-232)
Width: 1.25 in (3.2 cm)
Height: 0.7 in (1.8 cm)
Length: 2.4 in (6.1 cm)

Description

This adapter converts the RJ-11 diagnostic connector used on the ACI and ACM (MM-1200 and MM-1210) units to DB-9F RS-232. Combined with the utility software (MM-1195) and a laptop, technicians can configure, test and maintain ACIs and ACMs on site. The connection is compatible with USB RS-232 adapters, allowing use with laptops lacking this connector.

The RJ-45 side accepts a standard 2-pair US telephone cord, so it is not necessary to carry a dedicated cable. The adapter takes little space in a technician's laptop bag, reducing the likelihood that a return trip will be needed because it was left back at the shop.

Generic RJ-45 to DB-9F adapters are widely available, but beware that the color codes used vary between adapter brand. The colors in the picture above are accurate for the adapters we currently use, and are given in the table below as well. If you get adapters with a different color scheme, use the pin numbers instead, using the pin 1 indicators in the picture above.

	RS-232 Pin	RJ-45 Pin	Wire Color
DTR	4	3	black
TxD	3	4	red
RxD	2	5	green
GND	5	6	yellow

Features

- Use with any standard 2-pair telephone cable
- Converts RS-232 diagnostic connector from RJ-11 on the ACI/ACM side to DB-9F for connection to a PC
- Works with USB to RS-232 serial adapters



ETR... EDUCATIONAL TECHNOLOGY RESOURCES, INC.

1742 Church Street • Holbrook, New York 11741
tel 631.589.4300 • fax 631.589.4311 • www.etr-usa.com

Revised 2011.08.02