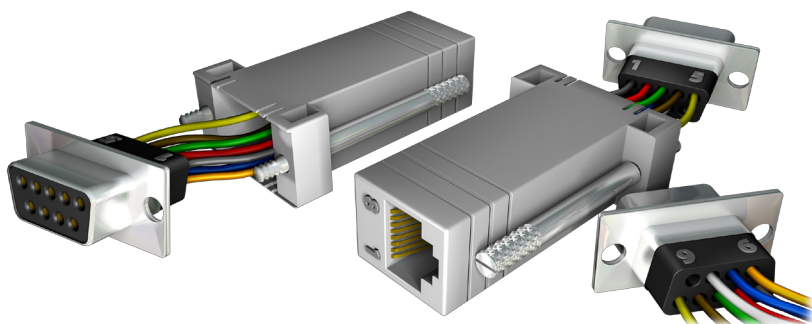


MediaMaster™ Video On Demand System

Cat-5 Serial Adapter, Straight Version for MM-1263/4 MM-1269ES



Specifications

Connectors: RJ-45F to
DB-9F

Width: 1.25 in (3.2 cm)

Height: 0.7 in (1.8 cm)

Length: 2.4 in (6.1 cm)

Description

This adapter accepts a standard Cat-5 Ethernet cable and converts it to a standard DB-9F RS-232 pinout, for use with the MM-1263 and MM-1264 Ethernet to Serial Converters. This is the straight-through version of the adapter. See the MM-1269C for the crossed or “null-modem” version.

This adapter is most often used with the MM-1220 and MM-1230 series devices, and is included when you buy these from ETR. If you are sourcing similar devices yourself, consult ETR to find out which adapter you need.

Generic RJ-45 to DB-9F adapters are widely available, but beware that the color codes used vary between adapter brand. The colors in the pictures above are accurate for the adapters we currently use, and are given in the table below as well. If you get adapters with a different color scheme, use the pin numbers instead, using the pin 1 indicators in the picture above.

	RS-232 Pin	RJ-45 Pin	Wire Color
RTS	7	1	blue
DSR	6	2	orange
DCD	1	3	black
RxD	2	4	red
TxD	3	5	green
GND	5	6	yellow
DTR	4	7	brown
CTS	8	8	white

Features

- Use with any standard 8-conductor Cat-5 Ethernet cable
- Adapt any serially-controlled device with a DB-9M port for use with MM-1263 or MM-1264



ETR... EDUCATIONAL TECHNOLOGY RESOURCES, INC.

1742 Church Street • Holbrook, New York 11741
tel 631.589.4300 • fax 631.589.4311 • www.etr-usa.com

Revised 2009.11.19